



NEW



Data Loggers for Routine Control

WASHER-DISINFECTORS / WASHER-DISINFECTORS FOR ENDOSCOPES /
STEAM STERILIZERS / BEDPAN WASHERS

Electronic Bowie Dick Test System

NEW



Together with the evaluation software Winlog.med the new EBI 16 data logger forms an easy to use and very reliable electronic measurement system. With it a comprehensive routine control of steam sterilizers can be performed using an Electronic Bowie Dick Test according to EN ISO 11140-4. In addition to the review of the steam penetration, the relevant sterilization parameters are controlled.

- **Reliable**
clear, reproducible measurement results
- **Accurate**
high-resolution graphical cycle display
- **Secure**
digital data recording and storage
- **Easy**
to use and evaluate

Starter sets **EBI 16**

With the EBI 16 starter sets you can start your Electronic Bowie Dick Test immediately according to the norms EN 285 / ISO 17665.

SL 1620 set (Part No. 1340-6573)

For performing the daily Bowie Dick Test and for routine control of steam sterilizers, washer-disinfectors and washer-disinfectors for endoscopes.

The set contains:

- Bowie Dick Test **EBI 16**
- **EBI 100-T100** temperature data logger
- Software and interface
- Aluminium carrying case



SL 1520 set (Part No. 1340-6198)

For performing the daily Bowie Dick Test in steam sterilizers.

The set contains:

- Bowie Dick Test **EBI 16**
- Software and interface
- Aluminium carrying case





What does the EBI 16 accomplish?

- Bowie Dick Test:**
 The EBI 16 delivers clear results during daily checks of the air evacuation test and steam penetration test according to ISO 17665, EN ISO 11140-4 and DIN EN 285.
- Early warning system:**
 The EBI 16 provides early identification of possible failures in steam-sterilizers. Even the smallest quantities of residual air that doesn't lead to a failed Bowie Dick Test yet are detected.
- Vacuum check:**
 The EBI 16 allows a reasonable vacuum check also for sterilizers without pressure display according to DIN EN 285.
- Verification of sterilization parameters:**
 The EBI 16 checks the sterilization parameters such as compensation time, hold time, sterilization temperature and sterilization time at +134 °C (+273 °F) for 3 minutes according to DIN EN 285.
- Calculation of lethality (F_0):**
 The EBI 16 monitors deviations between cycles by calculating total quantity of energy expended during sterilization process which is displayed by the F_0 value.

Benefits

- Easy use, evaluation and documentation of the Bowie Dick Test
- Clear, automatic passed / fail evaluation
- Reusable after 500 cycles with service and calibration by ebro
- Conforms with ISO 17665, EN ISO 11140-4 and EN 285
- Suitable for small steam sterilizers through compact design



Routine Control made easy



With the EBI 100 data loggers, ebro offers reliable measurement devices for routine control of steam sterilizers, washer-disinfectors and washer-disinfectors for endoscopes according to German guidelines and ISO 15883.

The data loggers are available in different versions including temperature or temperature / pressure loggers with and without external probes. They record the temperature and pressure variation over time during the washer-disinfector or sterilizer process and can easily be read out on a computer with the help of Winlog.med software. This software will make the test evaluation easy, and automatically calculates the A_0 value.

Starter sets **EBI 100**

With the EBI 100 starter sets you can start your routine control process immediately according to the German guideline.

In addition: Extend your sets with an EBI 16 data logger, and you will be able to perform daily electronic Bowie Dick Tests.

SL 1010 (Part No. 1340-6570)

For temperature monitoring and A_0 value calculation in bed pan washers.

The set contains:

- **EBI 100-T100** temperature data logger
- pH tester
- Conductivity tester
- Software and interface
- Aluminium carrying case



SL 1110 (Part No. 1340-6571)

For temperature and pressure monitoring as well as for A_0 value calculation in washer-disinfectors, washer-disinfectors for endoscopes and steam sterilizers.

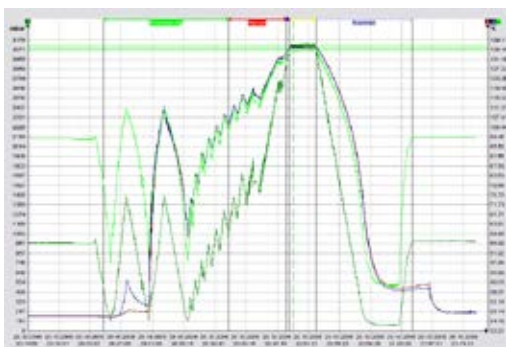
The set contains:

- **EBI 100-TP231** pressure / temperature data logger with Luer-Lock connection
- pH tester
- Conductivity tester
- Silicone protection box for logger
- Software and interface
- Aluminium carrying case



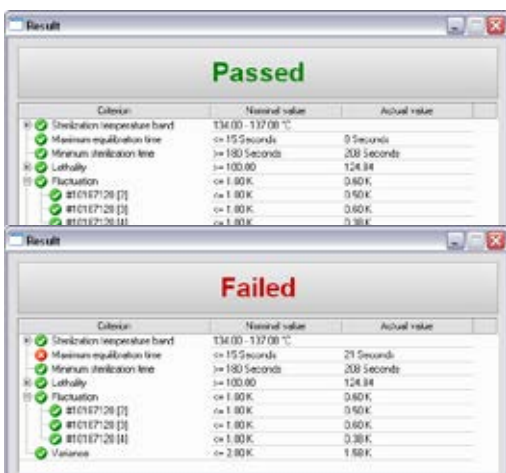


Easy data read-out with Winlog.med software



During the routine monitoring of washer-disinfectors, washer-disinfectors for endoscopes and steam sterilizers the pressure and temperature variation in time is documented with the help of the data loggers.

During the evaluation, the software recognizes and checks all relevant phases of the sterilization. In addition, all of the required parameters are calculated and graphically displayed with the help of the software. Winlog.med software allows the simultaneous start or readout of multiple data loggers.



After the routine monitoring process is concluded, Winlog.med delivers a clear and error-free pass/fail evaluation. The evaluation is fully automated by Winlog.med, which facilitates the daily work of the user.

Benefits

- Only one software is required: Winlog.med software can be used for the evaluation of EBI 100 data loggers as well as for the EBI 16 Bowie Dick Test.
- Only one interface is required, which can be applied for EBI 100 data loggers and for the EBI 16 Bowie Dick Test.

System requirements

For the software to operate smoothly on your computer, your computer must meet the following requirements:

- Processor speed with at least 1 GHz
- At least 1 GB working storage
- At least 1 GB free hard disc storage
- USB 2.0 (Universal Serial BUS)
- Microsoft Windows XP®, Windows Vista or Windows 7®





Technical Data

	EBI 100-T100 Temperature data logger	EBI 100-TP231 Pressure/temperature data logger	EBI 16 Bowie Dick Test Logger
Temperature measurement range	-40 °C ... +150 °C	0 °C ... +150 °C	0 °C ... +150 °C
Temperature accuracy	±0.3 °C	±0.3 °C	±0.1 °C
Pressure measurement range		1 mbar ... 4000 mbar	1 mbar ... 4000 mbar
Pressure accuracy		± 20 mbar	± 15 mbar
Protection class	IP 68	IP 68	IP 68
Battery	3.6 V, user replaceable	3.6 V, user replaceable	3.6 V, user replaceable
Factory calibration certificate	According to ISO 9001/2000	According to ISO 9001/2000	According to ISO 9001/2000

-ebro-
a xylem brand

ebro Electronic

Wissenschaftlich-Technische Werkstätten GmbH
Peringerstr. 10
85055 Ingolstadt, Germany

Phone +49 841 95478-0
Fax +49 841 95478-80
Internet: www.ebro.com
Email: ebro@xyleminc.com

All names are registered tradenames or trademarks of WTW GmbH.
Technical changes reserved.
© 2013 WTW GmbH.

October 2013